

11

Maintenance Liquid 11 (ML011-Z-K2/ML011-Z-B2)



For Head Nozzle Surface
- Clean Head nozzle surface

Available ink type:
LH-100 LUS-120 ELH-100 ELS-120

13

PR-200 Maintenance Liquid (ML013-Z-K2/ML013-Z-B2)



Nozzle Wash for PR-200 Head
- Perform Nozzle Wash for PR-200 Head

Available ink type:
PR-200

15

Maintenance Liquid 15 (ML015-Z-K2/ML015-Z-B1)



For Daily Maintenance
- Clean Wiper
- Clean Cap
- Clean the area around Heads
- Perform Nozzle Wash (except PR-200 Head)

Available ink type:
LH-100 LUS-120 LUS-150 PR-200
ELH-100 ELS-120

16

Maintenance Liquid 16 (ML016-Z-K2/ML016-Z-B2)



Powerful Nozzle Wash
- Perform Nozzle Wash for Nozzle missing /
Nozzle deflection

USE WITH CAUTION
(Instructions for use on the back)





Available ink type:
LH-100 LUS-120 LUS-150 PR-200
ELH-100 ELS-120

To get Details

How to Choose
Maintenance Liquid



MAINTENANCE LIST

Items	When	Note	Videos
Before Work			
Test Print	Every day	Check Test Print with Head Gap of 1.5 mm	 <div>Head nozzle surface maintenance</div>
Shake White Ink Bottle (If white ink is loading)		Take out the ink bottle > Cover with a maintenance cloth firmly and shake it slowly twenty times or more.	
During Work			
Head nozzle surface 11	Every day (1 to 2 times)	Clean the head nozzle surface with Maintenance Liquid 11.	
After Work			
Head nozzle surface 11	Every day	Clean the head nozzle surface with Maintenance Liquid 11.	 <div>Cleaning the Head and the Area around</div>
The area around Heads Cap Wiper 15		Clean the area around Heads, Cap and Wiper with Maintenance Liquid 15.	
Mist Filter		Clean the filter and filter case. (Or replace the filter)	
Table		Clean off any ink stains or dirt.	
Periodically Care (After Work)			
Nozzle Wash for PR-200 Head (If PR-200 ink is loading) 13	Twice a week (Every 2–3 days)	Perform Nozzle Wash with PR-200 Maintenance Liquid.	 <div>Cleaning the mist filter</div>
Glass of LED lamp		Clean off any ink stains or dirt with Alcohol	
Wiper Tube 15	Once a week	MAINTENANCE > STATION > CARRIGE OUT Fill the suction wiper with Maintenance liquid 15	 <div>Supplying antifreeze liquid</div>
Ink discharge passage 15		MAINTENANCE > STATION > DISWAY WASH Fill up the cap with Maintenance liquid 15 > ENTER	
Waste ink tank		MAINTENANCE > STATION > WASTE INK TANK *The amount of waste volume is counted, and a warning is displayed when it reaches 60%.	
Waste ink tank of suction wiper		MAINTENANCE > STATION > REPLACE WIPER WASTETANK	
Antifreeze liquid	Once a month	MAINTENANCE > Water FillUp Check and refill the antifreeze liquid.	

The most frequent accident



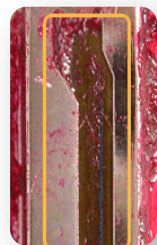
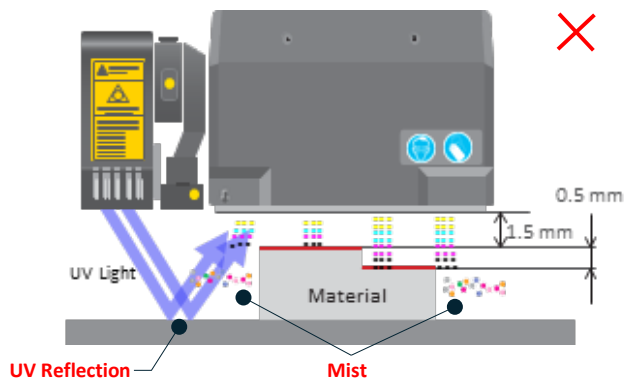
Nozzle missing

Nozzle deflection

Cause

If the gap between the media and the head is 2mm or more, the ink droplets turn into mist before they reach the media.

Also, the reflected UV light from UV LED will increase. That is caused the ink mist to harden due to the reflected UV light^{*1}, and the increased viscosity can cause the ink to land misaligned, missing nozzles, nozzle deflections, and blurry color.



*1 Ink mist to harden on the nozzle surface

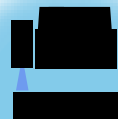
To prevent the problems...

STEP 1



Use JIG

STEP 2



Use Head gap within 2.0 mm

STEP 3



Daily Maintenance

Countermeasure

STEP 1 JIG

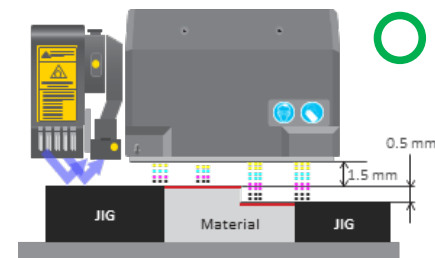
To prevent mist scattering and increased reflected light, please create and use a jig to ensure that there is no height difference between the edge of the print and the table.

STEP 2 HEAD GAP within 2.0 mm

Before printing or change the material, make sure the Media thickness on the machine setting.

STEP 3 DAILY MAINTENANCE

Perform daily maintenance follow per the maintenance list (page 1). Especially, clean the nozzle surface with [Maintenance Liquid 11](#). (LH-100, LUS-120, ELH-100, ELS-120 only)



If nozzle missing / nozzle deflection still occurs

If performing maintenance with [Maintenance Liquid 15](#) or PR-200 Maintenance Liquid does not restore the nozzle, use [Maintenance Liquid 16](#).

* In some cases, nozzle problems caused by factors other than foreign matter on the nozzle surface cannot be resolved. (e.g., Scratches on the nozzle surface, ink hardening on the nozzle surface or inside the head, head damage, etc.)

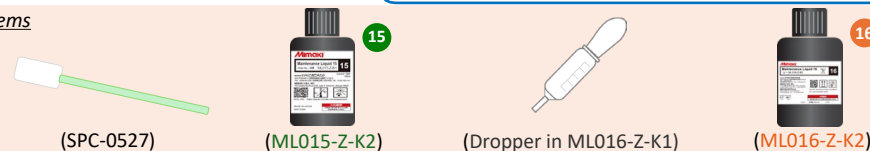
Warning

- ✓ Maintenance liquid 16 is stronger than other maintenance liquids and melts rubber, plastic, etc. Do not use other than Nozzle Wash.
- ✓ Before performing this maintenance for the first time, be sure to contact our engineers in advance. Also, be sure to read the operation manual before use.

Procedure

Be sure to wear the included safety glasses and gloves.

Items



- 1 Normal maintenance using [Maintenance Liquid 15](#)
 - Clean wiper, cap, around head
 - Head Cleaning
 - Nozzle Wash
- 2 MAINTENANCE > STATION > NOZZLE WASH
- 3 Soak a clean stick in [Maintenance liquid 15](#)
 - Clean wiper, cap
- 4 Fill the cap where the defect occurs with [Maintenance Liquid 16](#) using the included dropper.
- 5 Set the waiting time to 10 minutes and perform Nozzle Wash.
- 6 After Nozzle Wash is complete, perform Head Cleaning (Hard).
- 7 Check Test Print
- 8 If the problem is not resolved:
 - Perform cleaning (Hard) again
 - Perform Nozzle Wash up to three times

If it doesn't recover, please contact us.

SCAN ME!



UJF-MkII Series
Play List

YouTube Mimaki Support Video